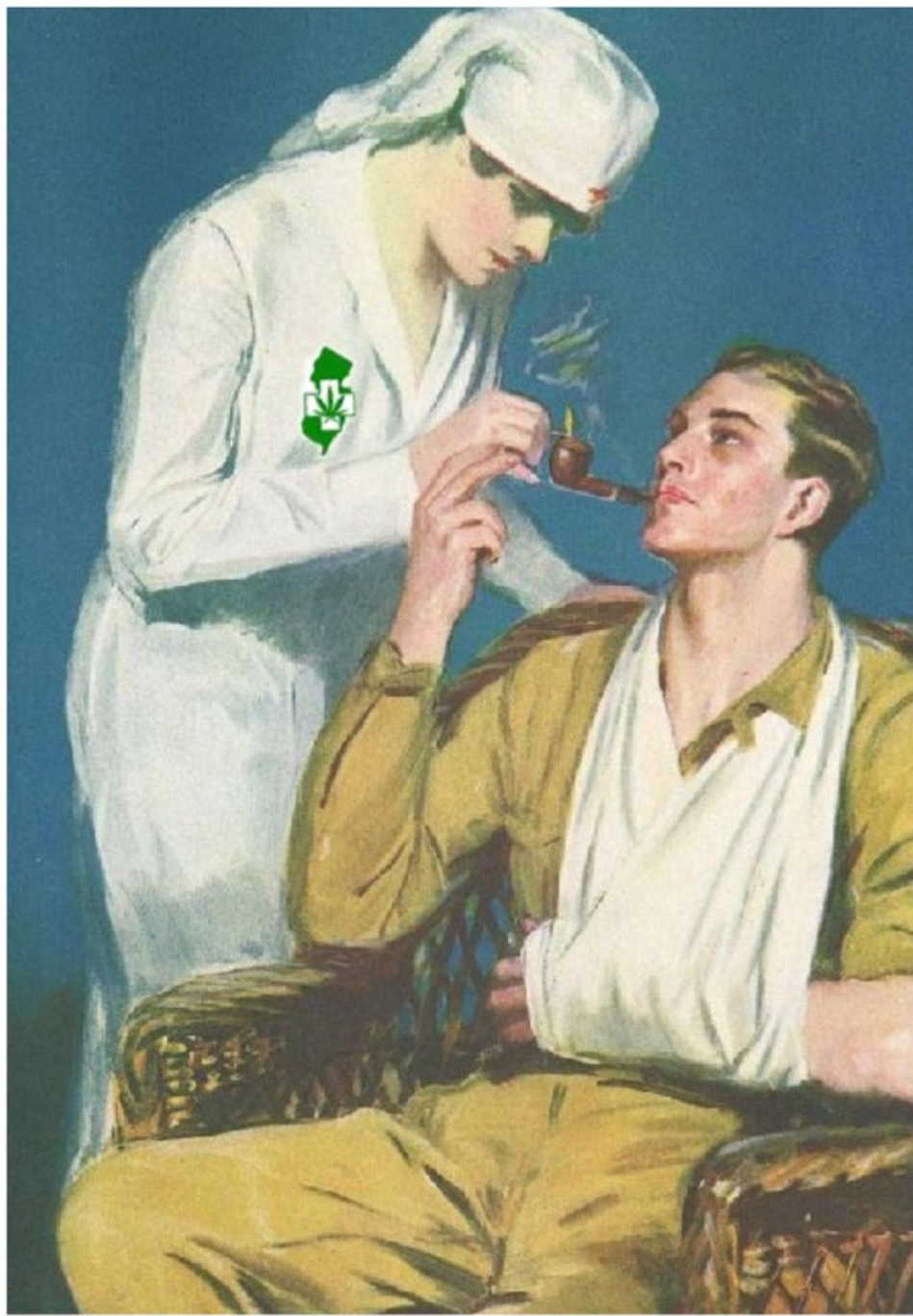


# Review of the New Jersey Compassionate Use Medical Marijuana Act

Ken Wolski MPA, RN





Wife  
Mother  
Sister  
Daughter  
Friend

**Cheryl Lee Miller**  
Silverton, New Jersey  
May 21, 1946 – June 7, 2003

# New Jersey Compassionate Use Medical Marijuana Act

**S-2200 Introduced January 2005**

Committee Hearings 2006/2007/2008/2009

Passed entire Senate 2/2009

Amended bill passed Assembly Health Committee 6/2009

CUMMA passed entire Assembly and Senate 1/11/10

**Signed into law by Gov. Jon Corzine 1/18/10**

Gov. Chris Christie inaugurated 1/20/10

Law took effect 10/1/10

Permits awarded to six (6) ATCs on 3/21/11;

**Medical marijuana finally available in NJ on 12/6/12**

# **New Jersey's Alternative Treatment Centers**

Currently, 6 ATCs serve about 40,000 NJ patients.

**Greenleaf ATC**, Montclair, NJ (opened 12/6/12);

**Harmony Foundation ATC**, Secaucus, NJ (opened 6/2018);

**Garden State Dispensary**, Woodbridge, NJ;

**Breakwater ATC**, Cranbury, NJ;

**Curaleaf ATC**, Bellmawr, NJ (Lozenges & topical solutions available since August, 2016);

**Compassionate Care Foundation**, Egg Harbor Twp., NJ.

# 6 New ATCs Coming to NJ

2 new ATCs in North, Central and Southern New Jersey plan to open Spring 2019:

- 7/16/18 - DOH issues Notice of RFA;
- 8/1/18 - RFAs & Forms available;
- 8/31/18 - Closing Date for Applications;
- 12/18 - 6 of 146 applicants chosen.

# DOH selected 6 applicants to apply for permits

- **NETA NJ, LLC – Phillipsburg, NJ**
- **GTI New Jersey, LLC – Paterson, NJ**
- **Verano NJ LLC – Elizabeth, NJ (Dispensary),  
Rahway, NJ (Cultivation Site)**
- **Justice Grown – Ewing, NJ**
- **MPX New Jersey – Atlantic City, NJ  
(Dispensary), Galloway, NJ (Cultivation)**
- **Columbia Care New Jersey – Vineland, NJ**

# New Jersey Compassionate Use Medical Marijuana Act

## Medical Marijuana

1. Limited to two ounces/month with ID card;
2. Only obtained through licensed ATCs;
3. Must have bona fide MD/Pt. relationship:

The physician has seen the patient for at least one year OR;

The physician has seen the patient four times for the patient's debilitating condition OR;

The physician assumes responsibility for providing management and care of the patient's debilitating condition after conducting a comprehensive medical history and physical examination. **NO MARIJUANA SPECIALISTS!**



# Process for obtaining NJ ID card

- Ask your doctor or see the DOH list <https://nj.gov/health/medicalmarijuana/patients/find-doctor/> & obtain a reference #;
- Upload to the DOH the reference number, a passport style photo, & proof on NJ residence (low-income info, if applicable);
- DOH verifies the documents, then sends a bill: \$100/\$20 for 2-year ID card (3/27/18).

# Qualifying Conditions in New Jersey

- **ALS, MS, MD;**
- **Terminal cancer/or any other terminal illness with prognosis < 12 months of life;**
- **IBD, including Crohn's disease;**
- **HIV/AIDS & Cancer** (if severe or chronic pain, severe nausea or vomiting, or wasting syndrome results from the condition or the treatment.)

# Qualifying Conditions in New Jersey

- The following conditions apply if resistant to conventional therapy (or if the patient is intolerant to it):
  - **Seizure disorder, including epilepsy;**
  - **Intractable skeletal muscular spasticity;**
  - **Glaucoma;**
  - **Post-Traumatic Stress Disorder (PTSD).**

# **Qualifying Conditions in New Jersey**

Added March 2018 from August 2016 petitions:

- **Anxiety**
- **Chronic pain of visceral origin or chronic pain related to musculoskeletal disorders;**
- **Migraine headaches;**
- **Tourette's Syndrome.**

**A Fairer New Jersey:  
Expanding Access to  
Medical Marijuana**



# Governor Murphy's 1<sup>st</sup> Week

- EXECUTIVE ORDER NO. 6, Jan. 23, 2108
- 60-day review of MMP by DOH & BME
- to expand & ease access to medical marijuana; &
- to effectively achieve the statutory objective of ensuring safe access to medical marijuana for patients in need.

# CMMNJ met with DOH

Deputy Commissioner Jackie Cornell on 2/28/18 as part of Gov. Murphy's [Executive Order #6](#) to expand and improve access to the MMP.

CMMNJ also met with DOH Assistant Commissioner Jeff Brown. CMMNJ urged extensive revisions to the MMP.

# DOH Exec. Order 6 Report 3/23/18

- Grant the 43 petitions under the categories of Chronic Pain of Musculoskeletal & Visceral Origin, Migraine, Anxiety, & T.S.
- Ease access to MMP portal by smartphone, and tablet by Spring 2019.
- Reduce ID card fees to \$100 or \$20 for seniors, vets and those on public assistance.



# DOH Exec. Order 6 Report 3/23/18

- ATCs may have satellite locations;
- Allow 2 caregivers/patient;
- Any NJ MD with current CDS reg. to rec. MM (public registry is now voluntary).
- **Proposed regulations:**
- DOH Commissioner to add conditions;
- Remove the psychiatrist requirement for access by minors.

# E.O. 6 Report: Statutory Recommendations

- Allow edibles for all patients;
- Allow patients to use more than one ATC;
- Allow marijuana as a first-line treatment;
- Double monthly allowance to 4 ounces;
- Eliminate maximum limit for hospice pts.;
- Remove non-profit requirement for ATCs.

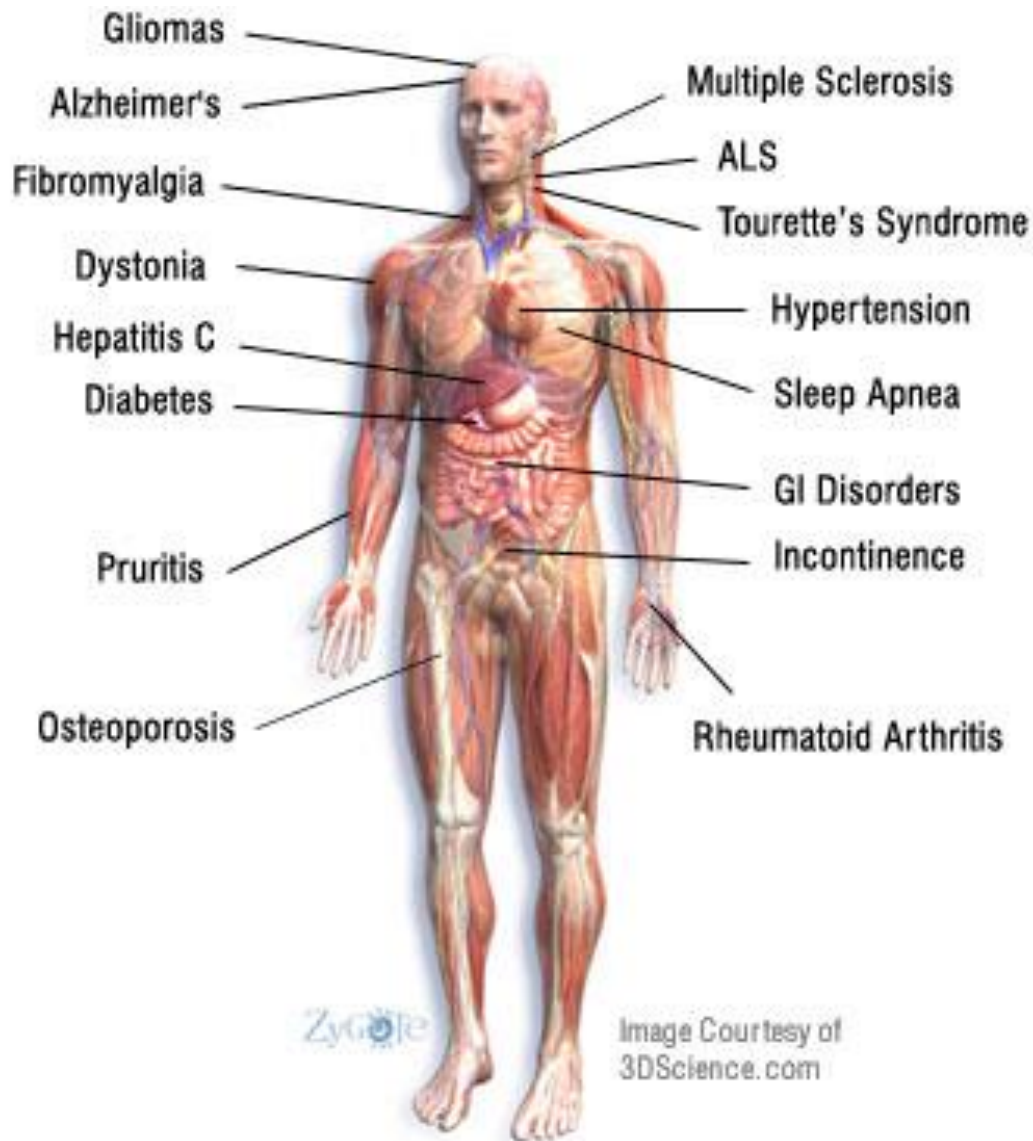
# E.O.: Additional considerations

- Allow home delivery;
- Allow external labs to do Q.A. testing;
- Eliminate sales tax on medical marijuana;
- Simplify ATC permitting & background checks;
- Review Panel: Develop educational programs on Endocannabinoid System for prescribers;
- Establish dosing and administration protocols;
- Study treatment efficacy in the MMP.

# Legislative Committees OK CUMMA Expansions on 11/26/18

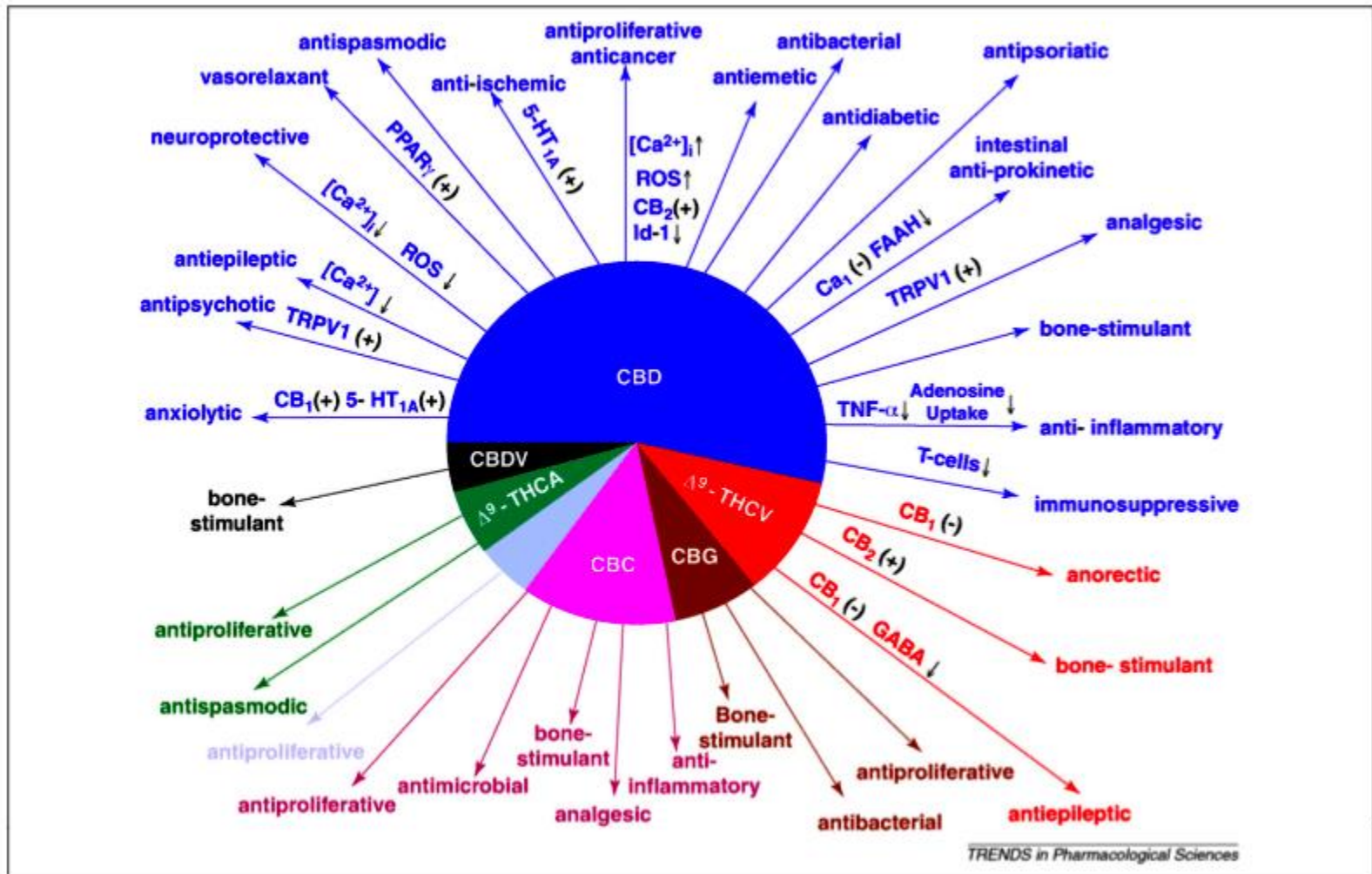
S10/A10 passed the Senate Health Committee & Joint Budget Committees. It:

- revises requirements to authorize medical cannabis (APNs & PAs OK),
- establishes institutional caregivers,
- revises permit requirements for (ATCs), and
- establishes additional legal/job protections for patients and caregivers.



### Potential Therapeutic Uses of Medical Marijuana

# Emerging Applications



**Figure 1.** Pharmacological actions of non-psychotropic cannabinoids (with the indication of the proposed mechanisms of action). Abbreviations:  $\Delta^9$ -THC,  $\Delta^9$ -tetrahydrocannabinol;  $\Delta^8$ -THC,  $\Delta^8$ -tetrahydrocannabinol; CBN, cannabitol; CBD, cannabidiol;  $\Delta^9$ -THCV,  $\Delta^9$ -tetrahydrocannabivarin; CBC, cannabichromene; CBG, cannabigerol;  $\Delta^9$ -THCA,  $\Delta^9$ -tetrahydrocannabinolic acid; CBDA, cannabidiolic acid; TRPV1, transient receptor potential vanilloid type 1; PPAR $\gamma$ , peroxisome proliferator-activated receptor  $\gamma$ ; ROS, reactive oxygen species; 5-HT<sub>1A</sub>, 5-hydroxytryptamine receptor subtype 1A; FAAH, fatty acid amide hydrolase. (+), direct or indirect activation;  $\uparrow$ , increase;  $\downarrow$ , decrease.

# ECS researchers say:

- “ECS activity may have therapeutic potential in almost all diseases affecting humans.”

P. Pacher, M.D., PhD

- “...the future of therapeutics depends heavily on understanding this system.”  
Jahan Marcu, Ph.D.

# Medical Marijuana info:

**Patients Out of Time:** <http://www.medicalcannabis.com/>

**Americans for Safe Access:**

<http://www.safeaccessnow.org/>

**Society of Cannabis Clinicians:**

<http://cannabisclinicians.org/>

**American Cannabis Nurses Association:**

<http://www.americancannabisnursesassociation.org/>

**Project CBD** <https://www.projectcbd.org/>

**The Answer Page:** <https://www.theanswerpage.com/>

**National Organization for the Reform of Marijuana Laws**

<http://norml.org/>



# Marijuana Reform

**New Jersey United for Marijuana Reform**

<https://www.njumr.org/>

**Drug Policy Alliance**

<http://www.drugpolicy.org/>

**Marijuana Policy Project**

<https://www.mpp.org/>

**Law Enforcement Action Partnership (LEAP)**

<https://lawenforcementactionpartnership.org/>

# Reference

- Hodge, J. G., Johnson, W., & Hensley, D. (2018). From Opioids to Marijuana: Out of the Tunnel and into the Fog. *Kansas Law Review*.
- New Jersey Governor Phil Murphy's Executive Order #6:<http://nj.gov/infobank/eo/056murphy/pdf/EO-6.pdf>
- New Jersey bill S10/2426/A10/A3470/A3473 to expand the "Compassionate Use Medical Marijuana Act:  
[https://www.njleg.state.nj.us/2018/Bills/S0500/10\\_R1.HTM?fbclid=IwAR2ld9Pjeuekw09IPhc63OserX0Ykm9ml6-rkuvOAxLdAxpjF8d67Gno28k](https://www.njleg.state.nj.us/2018/Bills/S0500/10_R1.HTM?fbclid=IwAR2ld9Pjeuekw09IPhc63OserX0Ykm9ml6-rkuvOAxLdAxpjF8d67Gno28k)